

2025 PRODUCT CATALOG



Raxwell®

Safety PPE

- HEAD & FACE PROTECTION
- HAND PROTECTION
- EYE PROTECTION
- HEARING PROTECTION
- RESPIRATORY PROTECTION
- PROTECTIVE CLOTHING
- FOOTWEAR

2025
Safety PPE



PROTECTIVE GEAR BUILT FOR DIVERSE
WORK ENVIRONMENTS — FROM
INDUSTRIAL AND AUTOMOTIVE TO
CONSTRUCTION AND FOOD SERVICE.



Hard Hats

Hard hats and helmets protect the wearer from hazards that impact the head. They have a suspension system that moves the impact force through the body to feet, helping to reduce strain to the head, neck, and spine. These hard hats and helmets are ANSI rated and OSHA compliant. Types and classes combine to indicate the impact type (vertical only or vertical and angled) and level of electrical protection (none, low voltage, or high voltage) provided. Hard hats and helmets should be inspected regularly for structural integrity. Hard hats are used by construction workers, road crews, or where required by OSHA safety regulations.



SKU	Suspension Adjustment Type	Number of Suspension Points	Head Protection Material	Accessory Mounting Options	Head Protection Venting	Head Protection Color	Impact-Resistant	Protection Level
RSH6102R	Swing Ratchet	4	ABS	Side-Slots	Yes	Red	Type I	Class G
RSH6102Y	Swing Ratchet	4	ABS	Side-Slots	Yes	Yellow	Type I	Class G
RSH6102W	Swing Ratchet	4	ABS	Side-Slots	Yes	White	Type I	Class G
RSH6102B	Swing Ratchet	4	ABS	Side-Slots	Yes	Blue	Type I	Class G

SKU	Suspension Adjustment Type	Number of Suspension Points	Head Protection Material	Accessory Mounting Options	Head Protection Venting	Head Protection Color	Impact-Resistant	Protection Level
RSH6103B	Swing Ratchet	4	ABS	Side-Slots	Yes	Blue	Type I	Class G
RSH6103R	Swing Ratchet	4	ABS	Side-Slots	Yes	Red	Type I	Class G
RSH6105BW	Swing Ratchet	4	ABS	Side-Slots	Yes	White	Type I	Class G
RSH6105Y	Swing Ratchet	4	ABS	Side-Slots	Yes	Yellow	Type I	Class G
RSH6103B01B	Swing Ratchet	4	ABS	Side-Slots	No	Blue	Type I	Class G
RSH610301R	Swing Ratchet	4	ABS	Side-Slots	No	Red	Type I	Class G
RSH6105B01W	Swing Ratchet	4	ABS	Side-Slots	No	White	Type I	Class G
RSH610501Y	Swing Ratchet	4	ABS	Side-Slots	No	Yellow	Type I	Class G

Face Shields

Face shields protect workers from liquids and flying debris. Face shields are worn over safety glasses or goggles when both eye and face protection are required. The visor protects the face while allowing workers to see clearly. Face shields that attach to hard hats provide face protection when head protection is also required.



SKU	Visor Material	Face Color	Temple Material	Impact-Resistant	UV Protection	Anti-Scratch
RSE81001C	PC	Clear	PC	Yes	380	Yes
RSE81001S	PC	Smoke	PC	Yes	380	Yes
RSE81002C	PVC	Clear	PolyesterElastic strap	NO	380	Yes

Safety Glasses

PPE-Eye Protection-Safety Glasses are core eye protection tools for industrial, laboratory, and construction sites, falling under the PPE system's eye protection category. Their key role is to resist flying debris, dust, glare, and UV rays via standard-compliant lenses and frames, lowering workplace eye injury risks.

Typically crafted from impact-resistant materials like PC lenses, these glasses feature stable yet comfortable frames. Some models add anti-fog, anti-scratch, or anti-UV functions for specific needs, suiting mechanical processing, chemical work, and outdoor construction with targeted safety.



RSE71061ACG ▲



RSE7106ASG ▲



RSE71062CB ▲



RSE71062CR ▲



RSE71062SR ▲



RSE71006C ▲



RSE71006S ▲



RSE71009 ▲



RSE71069B ▲



RSE71070CB ▲



RSE71070SB ▲



RSE71033CR ▲



RSE71033CY ▲



RSE71033SY ▲



RSE71058SB ▲



RSE71045CSO ▲



RSE71045CCO ▲



RSE71040CB ▲



RSE71046CO ▲



RSE71046CB ▲

SKU	Lens Material	Temple telescoping	Lens color	Impact-Resistant	UV Protection	Anti-Scratch	Meets standards
RSE71061ACG	PC	No	Clear	YES	380	YES	CE/ANSI
RSE7106ASG	PC	No	Smoke	YES	380	YES	CE/ANSI
RSE71062CB	PC	No	Clear	YES	380	YES	CE/ANSI
RSE71062CR	PC	No	Clear	YES	380	YES	CE/ANSI
RSE71062SR	PC	No	Smoke	YES	380	YES	CE/ANSI
RSE71006C	PC	No	Clear	YES	380	YES	CE/ANSI
RSE71006S	PC	No	Smoke	YES	380	YES	CE/ANSI
RSE71009	PC	No	Clear	YES	380	YES	CE/ANSI
RSE71003A	PC	Yes	Clear	YES	380	YES	CE/ANSI
RSE71069B	PC	No	Clear	YES	380	YES	CE/ANSI
RSE71070CB	PC	Yes	Clear	YES	380	YES	CE/ANSI
RSE71070SB	PC	Yes	Clear	YES	380	YES	CE/ANSI
RSE71033CR	PC	Yes	Clear	YES	380	YES	CE/ANSI
RSE71033CY	PC	Yes	Clear	YES	380	YES	CE/ANSI
RSE71033SY	PC	Yes	Clear	YES	380	YES	CE/ANSI
RSE71058SB	PC	No	Smoke	YES	380	YES	CE/ANSI
RSE71045CSO	PC	No	Smoke	YES	380	YES	CE/ANSI
RSE71045CCO	PC	No	Clear	YES	380	YES	CE/ANSI
RSE71040CB	PC	Yes	Clear	YES	380	YES	CE/ANSI
RSE71046CO	PC	No	Clear	YES	380	YES	CE/ANSI
RSE71046CB	PC	No	Clear	YES	380	YES	CE/ANSI

Safety Glasses

Clear safety goggles, which do not filter light, are ideal for indoor use or environments where lighting conditions vary. Designed to fit tightly against the face, they shield eyes from impact, liquids, and airborne particulates. A secure head strap ensures a snug, stable fit during wear. These goggles are commonly used in chemical manufacturing, warehousing, and are also provided to site visitors for protection.



RSE71052C ▲



RSE60001C ▲



RSE60074C ▲



RSE60070BO ▲

SKU	Lens Material	Lens color	Impact-Resistant	UV Protection	Anti-fog	Anti-Scratch	Meets standards	Meets standards
RSE60001C	Polycarbonate	Clear	YES	380	YES	YES	CE/ANSI	CE/ANSI
RSE60074C	Polycarbonate	Clear	YES	380	optional	YES	CE/ANSI	CE/ANSI
RSE71052C	Polycarbonate	Clear	YES	380	optional	YES	CE/ANSI	CE/ANSI
RSE60070BO	Polycarbonate	Clear	YES	380	optional	YES	CE/ANSI	CE/ANSI

Earplug Dispensers & Refills

Earplug dispensers and refills ensure easy access to earplugs for workers and facility visitors, serving as a practical reminder to prioritize hearing protection. Strategically placed in reception areas and at entrances to noisy work zones, dispensers allow people to grab and use earplugs conveniently as needed. They also keep earplugs organized and contained, reducing loss and waste. Refills are designed to replenish compatible dispensers, maintaining consistent availability of hearing protection.



RSHD1001AS ▲



RSHD1001AOPW ▲



RSHD1003A ▲

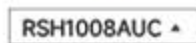
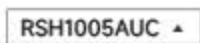
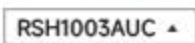
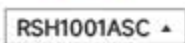


SKU	SNR	NRR	Style	Earplug Size	Earplug Color	Dispensers Capacity
RSHED5006	38 dB	32 dB	Uncorded	Universal	Orange	500Pairs
RSHD1001AS	38 dB	32 dB	Uncorded	Universal	Orange	500Pairs
RSHD1001AOPW	38 dB	32 dB	Uncorded	Universal	Multt-Color	500Pairs
RSHD1003A	37 dB	33 dB	Uncorded	Universal	Yellow	500Pairs

Earplugs

Earplugs create a seal in the ear canal to reduce sound levels, effectively helping prevent hearing loss in noisy work environments. More portable than earmuffs, they offer enhanced comfort for extended wear—especially in hot or humid conditions. Their compact design allows them to be worn under hard hats, faceshields, and eyewear. For increased protection, earplugs are often paired with earmuffs to boost the overall noise reduction rating.





SKU	SNR	NRR	Shape	Material	Earplug Color	Style	Rope material
RSH2018UC	33dB	26dB	Christmas Tree	silicone	CLEAR/BLUE	Uncorded	N/A
RSH2018C	33dB	26dB	Christmas Tree	silicone	CLEAR/BLUE	Corded	PVC
RSH2018CD	33dB	26dB	Christmas Tree	silicone	CLEAR/BLUE	Corded	PVC
RSH2PRVENDFU	/	/	Cylindrical shape	PU	Yellow	Uncorded	N/A
RSH2PRVENDFC	/	/	Cylindrical shape	PU	Yellow	Corded	PVC
RSH2PRVENDHVFU	35dB	28 dB	Flanged-Shaped	PU	Yellow/Pink	Uncorded	N/A
RSH2PRVENDHVC	35dB	28 dB	Flanged-Shaped	PU	Yellow/Pink	Corded	PVC
RSH2PRVENDPUFU	37dB	33 dB	Bullet-Shaped	PU	Yellow	Uncorded	N/A
RSHEC4104	27dB	22dB	Conical shape	PU/PP	Orange	Headband type	PP
RSHEC4103S	27dB	22dB	Conical shape	PU	Orange	Headband type	N/A

Earmuffs

Earmuffs fit over the ears to protect against potentially harmful sound levels that can cause hearing loss. Padded ear cups create a seal around the ears to dampen surrounding noise. Compared to earplugs, safety earmuffs provide a longer life and a more consistent fit to reach their optimal noise-reduction rating (NRR). They're also more visible than earplugs to confirm that workers comply with hearing safety rules. Protective earmuffs are ideal for environments with intermittent noise because they can rest around the neck when not in use and don't require rolling to reequip. They can be paired with earplugs to increase the NRR.





RSHEM5002A ▲



RSHEM7002 ▲



RSHEM5001B ▲

SKU	Material	SNR	NRR	Foldable	Cup Color	Meets Standards
RSHEM5002B	ABS	33dB	26 dB	Yes	Black/Red	CE/ANSI
RSHEM5002A	ABS	34dB	27 dB	No	Black/Red	CE/ANSI
RSHEM7002	ABS	31dB	25dB	No	Black/Glow/Green/Stripe	CE/ANSI
RSHEM5001B	ABS	32dB	26 dB	Yes	Green	CE/ANSI

Disposable Masks

Disposable respiratory protection products include disposable respirators and general-purpose disposable masks. Both are single-use protective devices covering the nose and mouth, providing protection through barrier or filtration materials, and are discarded after use to ensure hygiene.

Disposable respirators must be NIOSH-certified, featuring high-efficiency filter materials. They are classified into protection levels such as N95 and P100 according to standards, corresponding to different filtration efficiencies. Suitable for dusty, smoky, or other contaminated environments, they meet professional protection needs.

General-purpose disposable masks are made of multi-layer non-woven fabric, filtering larger particles like dust, pollen, and droplets through basic barrier action. They are suitable for daily low-risk scenarios such as public transportation and offices, providing basic respiratory hygiene protection.



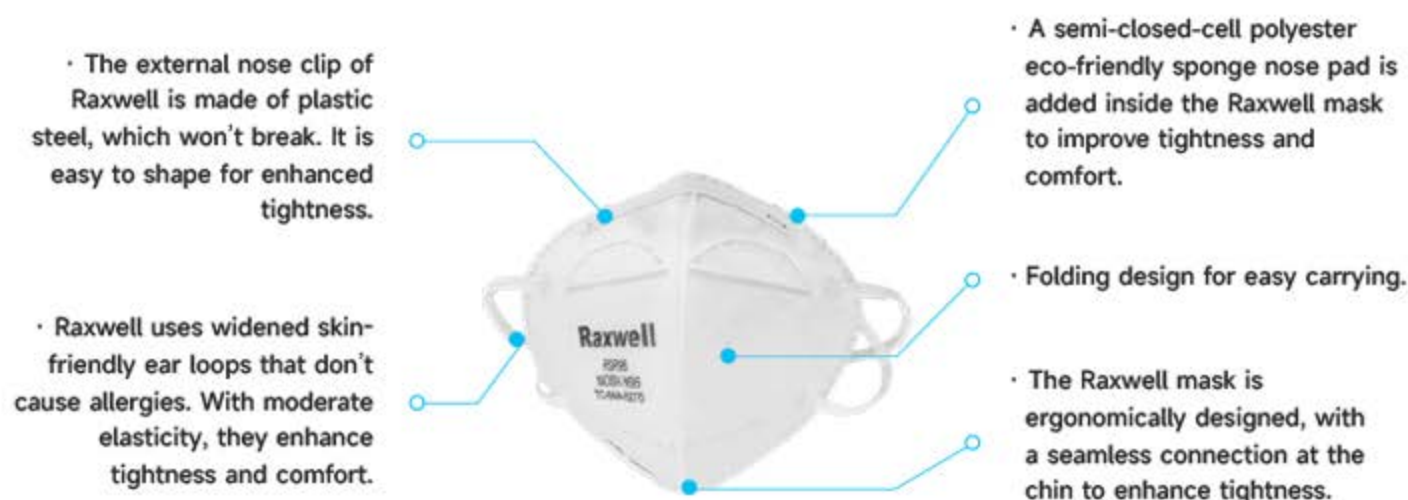
SKU	Material	ASTM Splash Rating	Mask Headstrap Type	Nose Clip	Face Seal	Color	Packaging quantity
RSR1300	PP/Melt blown/PP	Not Rated	Dual, Non-Adjustable	YES	None	Blue	50PK

Disposable Respirators

Disposable respiratory protection products include disposable respirators and general-purpose disposable masks. Both are single-use protective devices covering the nose and mouth, providing protection through barrier or filtration materials, and are discarded after use to ensure hygiene.

Disposable respirators must be NIOSH-certified, featuring high-efficiency filter materials. They are classified into protection levels such as N95 and P100 according to standards, corresponding to different filtration efficiencies. Suitable for dusty, smoky, or other contaminated environments, they meet professional protection needs.

General-purpose disposable masks are made of multi-layer non-woven fabric, filtering larger particles like dust, pollen, and droplets through basic barrier action. They are suitable for daily low-risk scenarios such as public transportation and offices, providing basic respiratory hygiene protection.



RSR95 ▲



RSR95H ▲



RSR960B ▲



RSR960H ▲



RSR850 ▲



RSR851 ▲

SKU	Material	Filter Efficiency Level	Exhalation Valve	Nose Clip	Color	Packaging quantity
RSR95	PP/Melt Blown / PP	>95%	No	Yes	White	25 PK
RSR95H	PP/Melt Blown / PP	>95%	No	Yes	White	25 PK
RSR960B	PP/Melt Blown/ES/PP	>95%	No	Yes	Black	25 PK
RSR960H	PP/Melt Blown / PP	>95%	No	Yes	Green	25 PK
RSR850	PP/Melt Blown/PET	>95%	No	Yes	White	20 PK
RSR851	PP/Melt Blown/PET	>95%	Yes	Yes	White	18 PK

Hairnets, Bouffants & Beard Nets

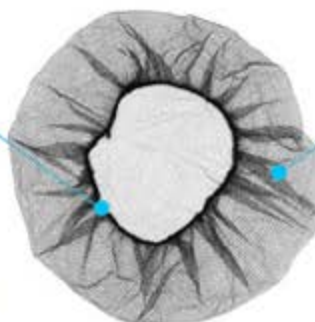
Prevents hair-related contamination in work environments

Crafted with durable woven fabric in a honeycomb pattern, ensuring reliable protection and safety performance

Blocks hair from contaminating exposed food

A stretchable elastic band provides a secure, snug fit while ensuring all-day wearing comfort

- **Secure Fit**- Elastic edges ensure a snug fit without slipping.



RSE1621BR, RSE1624BR ▶

- **Material**-Made from high-quality nylon mesh, offering:
 - **Breathability**-Allows air circulation, reducing discomfort during prolonged wear.
 - **Lightweight & Stretchable**-Fits most head sizes comfortably.
 - **Static-Resistant**-Minimizes dust and particle attraction in clean environments.

SKU	Material	Latex Free	Size	Color
RSH1621	Nylon	NO	21"	White
RSH1624	Nylon	NO	24"	White
RSE1621BR	Nylon	NO	21"	Brown
RSE1624BR	Nylon	NO	24"	Brown
RSBRD1000W	Polypropylene	NO	18"	White



RSH1621, RSH1624 ▶



RSBRD1000W ▶

Chemical, Liquid & Particulate Protective Clothing

Microporous laminated nonwoven protective suits are industrial-grade protective garments designed for workplaces requiring reliable barrier protection. Crafted with a laminated nonwoven fabric and microporous membrane, these non-medical suits balance essential protective functions with practical usability, making them suitable for demanding industrial environments.

SKU	Material	Liquid repellency	Particulate filtration	Anti-Static	Closure Type	Wrist Type	Ankle Type	Color	Size
RSB2008	PP+PE	EN 13034 Type 6	EN 13982-1 Type 5	YES	Zipper	Elastic	Elastic	White	S
RSB2010	PP+PE	EN 13034 Type 6	EN 13982-1 Type 5	YES	Zipper	Elastic	Elastic	White	M
RSB2010	PP+PE	EN 13034 Type 6	EN 13982-1 Type 5	YES	Zipper	Elastic	Elastic	White	XL

- Laminated material
Provides effective protection against liquids and dust

- Front placket with two - way zipper for easy on and off
(Re - stickable placket for enhanced protective performance)



- Designed with elastic bands at the hat, waist, wrists and pant cuffs

• RSB2008-RSB2010



RSB19MVA4MEB ▲



RSB19V4MB ▲



RSB2846PW ▲



RSB2846PB ▲



RSB3555PW ▲

SKU	Material	Thickness mil	Color	Size
RSB19MVA4MEB	Polyethylene	1.75	Blue	55"
RSB19V4MB	Vinyl	4	Blue	50"
RSB2846PW	Polyethylene	1	White	28"x 46"
RSB2846PB	Polyethylene	1	Blue	28"x 46"
RSB3555PW	Polyethylene	1.5	White	35"x 55"
RS3548V4B	Vinyl	4	Blue	35"x 48"
RS3545V6W	Vinyl	6	White	35"x 45"
RS3548V6B	Vinyl	6	Blue	35"x 48"
RSB18PSLVW	Polyethylene	N/A	White	18"
RSB18PSLVB	Polyethylene	N/A	Blue	18"
RSB18VSLVB	Vinyl	6	Blue	18"



RS3548V4B ▲



RS3545V6W ▲



RS3548V6B ▲



RSB18PSLVW ▲



RSB18PSLVB ▲



RSB18VSLVB ▲

Safety vest

Safety vests are high-visibility protective garments designed to enhance wearer visibility in low-light or high-risk environments. Crafted with fluorescent fabrics and retroreflective strips, they ensure clear detection by others, reducing collision or accident risks. Suitable for construction, roadwork, logistics, and emergency response, these vests balance durability, breathability, and compliance with safety standards for reliable on-site protection.

- Mesh fabric, skin - friendly and breathable
- Hook and loop fastener for easy wearing and taking off, with repeated sticking and high adhesiveness

RSB2000 ▶



- High - brightness reflective strips running through the front and back
- Laser - cut edge wrapping, with flat and neat cutting surfaces, no fuzzing

- Mesh fabric, skin - friendly and breathable
- High-brightness reflective strips running through the front and back

RSB1040 ▶



- Safety zipper, firm and tear-resistant
- Multiple pockets, safe and convenient for storing and retrieving items



RSB1101 ▶



RSB1102 ▶



RSB2001 ▶



RSB2002 ▶



RSB2003 ▶



RSB2004 ▶



RSB2005 ▶

SKU	Material	Reflective tape	Anti-Static	Closure Type	Pockets	Color	Size	ANSI/ISEA Level
RSB1101SM	100% polyester mesh fabric.	YES	NO	Zipper	1	Lime	S/M	Class 2
RSB1101LXL	100% polyester mesh fabric.	YES	NO	Zipper	1	Lime	L/XL	Class 2
RSB110123XL	100% polyester mesh fabric.	YES	NO	Zipper	1	Lime	2XL/3XL	Class 2

SKU	Material	Reflective tape	Anti-Static	Closure Type	Pockets	Color	Size	ANSI/ISEA Level
RSB1102SM	100% polyester warp - knitted fabric.	YES	NO	Zipper	2	Lime	S/M	Class 2
RSB1102LXL	100% polyester warp - knitted fabric.	YES	NO	Zipper	2	Lime	L/XL	Class 2
RSB110223XL	100% polyester warp - knitted fabric.	YES	NO	Zipper	2	Lime	2XL/3XL	Class 2
RSB2000SXL	100% polyester mesh fabric.	YES	NO	Hook and loop fastener	N/A	Lime	SXL	N/A
RSB200025XL	100% polyester mesh fabric.	YES	NO	Hook and loop fastener	N/A	Lime	25XL	N/A
RSB2001SXL	100% polyester mesh fabric.	YES	NO	Hook and loop fastener	N/A	Orange	SXL	N/A
RSB200125XL	100% polyester mesh fabric.	YES	NO	Hook and loop fastener	N/A	Orange	25XL	N/A
RSB2002SM	100% polyester mesh fabric.	YES	NO	Hook and loop fastener	1	Lime	S/M	Class 2
RSB2002LXL	100% polyester mesh fabric.	YES	NO	Hook and loop fastener	1	Lime	L/XL	Class 2
RSB200223XL	100% polyester mesh fabric.	YES	NO	Hook and loop fastener	1	Lime	2XL/3XL	Class 2
RSB2003SM	100% polyester mesh fabric.	YES	NO	Hook and loop fastener	1	Orange	S/M	Class 2
RSB2003LXL	100% polyester mesh fabric.	YES	NO	Hook and loop fastener	1	Orange	L/XL	Class 2
RSB200323XL	100% polyester mesh fabric.	YES	NO	Hook and loop fastener	1	Orange	2XL/3XL	Class 2
RSB1040SM	100% polyester mesh fabric.	YES	NO	Zipper	3	Lime	S/M	Class 3
RSB1040LXL	100% polyester mesh fabric.	YES	NO	Zipper	3	Lime	L/XL	Class 3
RSB104023XL	100% polyester mesh fabric.	YES	NO	Zipper	3	Lime	2XL/3XL	Class 3
RSB2004SM	100% polyester mesh fabric.	YES	NO	Zipper	1	Lime	S/M	Class 2
RSB2004LXL	100% polyester mesh fabric.	YES	NO	Zipper	1	Lime	L/XL	Class 2
RSB200423XL	100% polyester mesh fabric.	YES	NO	Zipper	1	Lime	2XL/3XL	Class 2
RSB2005SM	100% polyester mesh fabric.	YES	NO	Zipper	1	Orange	S/M	Class 2
RSB2005LXL	100% polyester mesh fabric.	YES	NO	Zipper	1	Orange	L/XL	Class 2
RSB200523XL	100% polyester mesh fabric.	YES	NO	Zipper	1	Orange	2XL/3XL	Class 2

Disposable Gloves

Disposable gloves create a reliable protective barrier between hands and the items being handled, maintaining hand cleanliness while isolating potential risks from the external environment. Their core value lies in preventing hand oils and dirt from transferring to the surfaces of held or inspected items, thus avoiding contamination at the source of operation. As a single-use protective solution, these gloves are promptly replaced after each task is completed, breaking the chain of cross-contamination through procedural control.

In terms of usage characteristics, thin gloves offer more flexible operational feel, enabling precise tactile transmission and adapting to delicate tasks; thicker models, on the other hand, focus on enhancing protective strength to provide more stable safety guarantees for hands. For scenario adaptation, general-purpose gloves can meet the needs of routine operations such as cleaning and inspection; food-grade gloves certified by the FDA are specifically designed for scenarios involving direct food contact, such as catering services and food processing, strictly complying with hygiene and safety standards.

- This product is made of high-quality nitrile rubber, featuring excellent flexibility, resistance to oil contamination, and effective anti-permeability.
- It is produced using a powder-free process with thorough leaching to ensure high cleanliness.



- The finger surfaces are textured (matte-finished) for anti-slip performance, enabling flexible operation.

◀ RX3009-3015



RX60001-60005 ▶



RXI2024-B-RXE20235-B ▶



RX5006-50010 ▶



RX40001-40005 ▶



RXL70001-70004 ▶

SKU	Material	Powdered/ Powder-Free	Nominal Palm Thickness	Surface	Acceptable Quality Level (AQL)	Silicone- Free	Color	Size
RX60001	Vinyl	Powder-Free	3	Smooth	2.5	NO	Clear	S
RX60002	Vinyl	Powder-Free	3	Smooth	2.5	NO	Clear	M

SKU	Material	Powdered/ Powder-Free	Nominal Palm Thickness	Surface	Acceptable Quality Level (AQL)	Silicone- Free	Color	Size
RX60003	Vinyl	Powder-Free	3	Smooth	2.5	NO	Clear	L
RX60004	Vinyl	Powder-Free	3	Smooth	2.5	NO	Clear	XL
RX60005	Vinyl	Powder-Free	3	Smooth	2.5	NO	Clear	XXL
RX3009	Nitrile	Powder-Free	4	Finger Textured	2.5	NO	Blue	XS
RX3011	Nitrile	Powder-Free	4	Finger Textured	2.5	NO	Blue	S
RX3012	Nitrile	Powder-Free	4	Finger Textured	2.5	NO	Blue	M
RX3013	Nitrile	Powder-Free	4	Finger Textured	2.5	NO	Blue	L
RX3014	Nitrile	Powder-Free	4	Finger Textured	2.5	NO	Blue	XL
RX3015	Nitrile	Powder-Free	4	Finger Textured	2.5	NO	Blue	XXL
RXI20242-B	Nitrile	Powder-Free	4.5	Fully Textured	2.5	NO	Black	XS
RXI20223-B	Nitrile	Powder-Free	4.5	Fully Textured	2.5	NO	Black	S
RXI20224-B	Nitrile	Powder-Free	4.5	Fully Textured	2.5	NO	Black	M
RXI20225-B	Nitrile	Powder-Free	4.5	Fully Textured	2.5	NO	Black	L
RXI20226-B	Nitrile	Powder-Free	4.5	Fully Textured	2.5	NO	Black	XL
RXI20241-B	Nitrile	Powder-Free	4.5	Fully Textured	2.5	NO	Black	XXL
RXF20245-B	Nitrile	Powder-Free	5.5	Fully Textured	2.5	NO	Black	S
RXF20246-B	Nitrile	Powder-Free	5.5	Fully Textured	2.5	NO	Black	M
RXF20247-B	Nitrile	Powder-Free	5.5	Fully Textured	2.5	NO	Black	L
RXF20248-B	Nitrile	Powder-Free	5.5	Fully Textured	2.5	NO	Black	XL
RXF20249-B	Nitrile	Powder-Free	5.5	Fully Textured	2.5	NO	Black	XXL
RXE20236-B	Nitrile	Powder-Free	6.5	Fully Textured	2.5	NO	Black	XS
RXE20231-B	Nitrile	Powder-Free	6.5	Fully Textured	2.5	NO	Black	S
RXE20232-B	Nitrile	Powder-Free	6.5	Fully Textured	2.5	NO	Black	M
RXE20233-B	Nitrile	Powder-Free	6.5	Fully Textured	2.5	NO	Black	L
RXE20234-B	Nitrile	Powder-Free	6.5	Fully Textured	2.5	NO	Black	XL
RXE20235-B	Nitrile	Powder-Free	6.5	Fully Textured	2.5	NO	Black	XXL
RX50006	Nitrile	Powder-Free	8.5	Diamond Grip	2.5	NO	Orange	S
RX50007	Nitrile	Powder-Free	8.5	Diamond Grip	2.5	NO	Orange	M
RX50008	Nitrile	Powder-Free	8.5	Diamond Grip	2.5	NO	Orange	L
RX50009	Nitrile	Powder-Free	8.5	Diamond Grip	2.5	NO	Orange	XL
RX50010	Nitrile	Powder-Free	8.5	Diamond Grip	2.5	NO	Orange	XXL
RX40001	Nitrile	Powder-Free	8.5	Smooth	2.5	NO	Blue	S
RX40002	Nitrile	Powder-Free	8.5	Smooth	2.5	NO	Blue	M

SKU	Material	Powdered/ Powder-Free	Nominal Palm Thickness	Surface	Acceptable Quality Level (AQL)	Silicone- Free	Color	Size
RX40003	Nitrile	Powder-Free	8.5	Smooth	2.5	NO	Blue	L
RX40004	Nitrile	Powder-Free	8.5	Smooth	2.5	NO	Blue	XL
RX40005	Nitrile	Powder-Free	8.5	Smooth	2.5	NO	Blue	XXL
RXL70001	Latex	Powder-Free	8.5	Smooth	2.5	NO	Natural	S
RXL70002	Latex	Powder-Free	8.5	Smooth	2.5	NO	Natural	M
RXL70003	Latex	Powder-Free	8.5	Smooth	2.5	NO	Natural	L
RXL70004	Latex	Powder-Free	8.5	Smooth	2.5	NO	Natural	XL

Coated Gloves

Coated gloves build on the base of knitted gloves with a protective coating (e.g., latex, nitrile, or polyurethane) applied to the palm or fingertips. This coating enhances grip performance and adds mild abrasion resistance, making them suitable for tasks requiring better control over tools or objects—such as light assembly, packaging, or warehouse handling—while retaining the breathability and flexibility of knitted bases.



RXLBA0012L ▲



RXLJA3004L ▲



RXNJJ5006DL ▲



RXNJJ3004L ▲



RXPES8003L ▲

SKU	Knitting Technology	Knitting Material	Coating Material	Coating Texture	Touchscreen Compatible	Size	Protective Performance
RXPES8003S	18 Gauge	Polyester	PU	Glossy	NO	S	EN388 2121X
RXPES8003M	18 Gauge	Polyester	PU	Glossy	NO	M	EN388 2121X
RXPES8003L	18 Gauge	Polyester	PU	Glossy	NO	L	EN388 2121X
RXPES8003XL	18 Gauge	Polyester	PU	Glossy	NO	XL	EN388 2121X
RXNJJ5006DS	15 Gauge	Nylon/Spandex	Nitrile	Microfoam Washed	YES	S	EN388 4131A ANSI A1
RXNJJ5006DM	15 Gauge	Nylon/Spandex	Nitrile	Microfoam Washed	YES	M	EN388 4131A ANSI A1
RXNJJ5006DL	15 Gauge	Nylon/Spandex	Nitrile	Microfoam Washed	YES	L	EN388 4131A ANSI A1
RXNJJ5006DXL	15 Gauge	Nylon/Spandex	Nitrile	Microfoam Washed	YES	XL	EN388 4131A ANSI A1
RXNJJ3004S	13 Gauge	Polyester	Nitrile	Textured	NO	S	EN388 4131X

SKU	Knitting Technology	Knitting Material	Coating Material	Coating Texture	Touchscreen Compatible	Size	Protective Performance
RXNJX3004M	13 Gauge	Polyester	Nitrile	Textured	NO	M	EN388 4131X
RXNJX3004L	13 Gauge	Polyester	Nitrile	Textured	NO	L	EN388 4131X
RXNJX3004XL	13 Gauge	Polyester	Nitrile	Textured	NO	XL	EN388 4131X
RXLBA0012S	10 Gauge	Polyester/Cotton	Latex	Crinkle	NO	S	EN388 2142X
RXLBA0012M	10 Gauge	Polyester/Cotton	Latex	Crinkle	NO	M	EN388 2142X
RXLBA0012L	10 Gauge	Polyester/Cotton	Latex	Crinkle	NO	L	EN388 2142X
RXLBA0012XL	10 Gauge	Polyester/Cotton	Latex	Crinkle	NO	XL	EN388 2142X
RXLJA3004S	13 Gauge	Polyester	Latex	Crinkle	NO	S	EN388 2121X
RXLJA3004M	13 Gauge	Polyester	Latex	Crinkle	NO	M	EN388 2121X
RXLJA3004L	13 Gauge	Polyester	Latex	Crinkle	NO	L	EN388 2121X
RXLJA3004XL	13 Gauge	Polyester	Latex	Crinkle	NO	XL	EN388 2121X

Product Features

- Breathable
- Dexterity
- Flexible
- Tlight

Cut-Resistant Gloves

The cut-resistant gloves series focuses on providing reliable hand protection against cutting hazards in industrial, mechanical, or high-risk operational scenarios. Designed to meet strict safety standards for medium-to-high risk environments, these gloves prioritize durability, flexibility, and targeted cut resistance to safeguard hands during tasks involving sharp tools, materials, or machinery.

A key offering in this series is ATOMFLEX—Raxwell's proprietary brand for cut-resistant gloves made with our special high-strength metal-blend yarn. This signature product combines advanced material technology with ergonomic design, ensuring effective cut protection without compromising dexterity, making it suitable for professional applications where both safety and precision are critical.



RXNJC8257DL ▲



RXNJC8466L ▲



RXNJE5267L ▲



RXNJE8273DQL ▲



RXNJE8461L ▲



RXNJJ4255DQL ▲



RXNJJ5266QL ▲



RXPES3063L ▲



RXYZZ5192L ▲

SKU	Knitting Technology	Knitting Material	Coating Material	Coating Texture	Includes Reinforced Thumb Crotch	Touchscreen Compatible	Size	Protective Performance
RXPES3063S	13 Gauge	HPPE/Spandex	PU	Glossy	NO	NO	S	EN388 4X42B, ANSI CUT A2
RXPES3063M	13 Gauge	HPPE/Spandex	PU	Glossy	NO	NO	M	EN388 4X42B, ANSI CUT A2
RXPES3063L	13 Gauge	HPPE/Spandex	PU	Glossy	NO	NO	L	EN388 4X42B, ANSI CUT A2
RXPES3063XL	13 Gauge	HPPE/Spandex	PU	Glossy	NO	NO	XL	EN388 4X42B, ANSI CUT A2
RXNJJ5266QS	15 Gauge	HPPE/Nylon/Spandex	Nitrile	Microfoam Washed	YES	YES	S	EN388 4X42D, ANSI CUT A4
RXNJJ5266QM	15 Gauge	HPPE/Nylon/Spandex	Nitrile	Microfoam Washed	YES	YES	M	EN388 4X42D, ANSI CUT A4
RXNJJ5266QL	15 Gauge	HPPE/Nylon/Spandex	Nitrile	Microfoam Washed	YES	YES	L	EN388 4X42D, ANSI CUT A4
RXNJJ5266QXL	15 Gauge	HPPE/Nylon/Spandex	Nitrile	Microfoam Washed	YES	YES	XL	EN388 4X42D, ANSI CUT A4
RXNJJ4255DQS	21 Gauge	HPPE/Nylon/Spandex	Nitrile	Microfoam Washed	YES	YES	S	EN388 4X41D, ANSI CUT A4
RXNJJ4255DQM	21 Gauge	HPPE/Nylon/Spandex	Nitrile	Microfoam Washed	YES	YES	M	EN388 4X41D, ANSI CUT A4
RXNJJ4255DQL	21 Gauge	HPPE/Nylon/Spandex	Nitrile	Microfoam Washed	YES	YES	L	EN388 4X41D, ANSI CUT A4
RXNJJ4255DQXL	21 Gauge	HPPE/Nylon/Spandex	Nitrile	Microfoam Washed	YES	YES	XL	EN388 4X41D, ANSI CUT A4
RXNJE5267S	15 Gauge	HPPE/Polyester/Spandex	Nitrile	Foamed	NO	YES	S	EN388 4X42E, ANSI CUT A5
RXNJE5267M	15 Gauge	HPPE/Polyester/Spandex	Nitrile	Foamed	NO	YES	M	EN388 4X42E, ANSI CUT A5
RXNJE5267L	15 Gauge	HPPE/Polyester/Spandex	Nitrile	Foamed	NO	YES	L	EN388 4X42E, ANSI CUT A5
RXNJE5267XL	15 Gauge	HPPE/Polyester/Spandex	Nitrile	Foamed	NO	YES	XL	EN388 4X42E, ANSI CUT A5

SKU	Knitting Technology	Knitting Material	Coating Material	Coating Texture	Includes Reinforced Thumb Crotch	Touchscreen Compatible	Size	Protective Performance
RXNJC8257DS	18 Gauge	HPPE/Polyester/ Spandex/ Tungsten Wire	Nitrile	Foamed Textured	NO	YES	S	EN388 4X42E, ANSI CUT A5
RXNJC8257DM	18 Gauge	HPPE/Polyester/ Spandex/ Tungsten Wire	Nitrile	Foamed Textured	NO	YES	M	EN388 4X42E, ANSI CUT A5
RXNJC8257DL	18 Gauge	HPPE/Polyester/ Spandex/ Tungsten Wire	Nitrile	Foamed Textured	NO	YES	L	EN388 4X42E, ANSI CUT A5
RXNJC8257DXL	18 Gauge	HPPE/Polyester/ Spandex/ Tungsten Wire	Nitrile	Foamed Textured	NO	YES	XL	EN388 4X42E, ANSI CUT A5
RXNJE8273DQS	18 Gauge	HPPE/Polyester/ Spandex/ Tungsten Wire	Nitrile	Foamed	YES	YES	S	EN388 4X42F,ANSI CUT A6
RXNJE8273DQM	18 Gauge	HPPE/Polyester/ Spandex/ Tungsten Wire	Nitrile	Foamed	YES	YES	M	EN388 4X42F,ANSI CUT A6
RXNJE8273DQL	18 Gauge	HPPE/Polyester/ Spandex/ Tungsten Wire	Nitrile	Foamed	YES	YES	L	EN388 4X42F,ANSI CUT A6
RXNJE8273DQXL	18 Gauge	HPPE/Polyester/ Spandex/ Tungsten Wire	Nitrile	Foamed	YES	YES	XL	EN388 4X42F,ANSI CUT A6
RXNJC8466S	18 Gauge	HPPE/Polyester/ Spandex/ Tungsten Wire	Nitrile	Foamed Textured	NO	YES	S	EN388 4X42F,ANSI CUT A7
RXNJC8466M	18 Gauge	HPPE/Polyester/ Spandex/ Tungsten Wire	Nitrile	Foamed Textured	NO	YES	M	EN388 4X42F,ANSI CUT A7
RXNJC8466L	18 Gauge	HPPE/Polyester/ Spandex/ Tungsten Wire	Nitrile	Foamed Textured	NO	YES	L	EN388 4X42F,ANSI CUT A7
RXNJC8466XL	18 Gauge	HPPE/Polyester/ Spandex/ Tungsten Wire	Nitrile	Foamed Textured	NO	YES	XL	EN388 4X42F,ANSI CUT A7
RXNJE8461S	18 Gauge	HPPE/Polyester/ Spandex/ Tungsten Wire	Nitrile	Foamed	NO	YES	S	EN388 4X42F, ANSI CUT A8
RXNJE8461M	18 Gauge	HPPE/Polyester/ Spandex/ Tungsten Wire	Nitrile	Foamed	NO	YES	M	EN388 4X42F, ANSI CUT A8
RXNJE8461L	18 Gauge	HPPE/Polyester/ Spandex/ Tungsten Wire	Nitrile	Foamed	NO	YES	L	EN388 4X42F, ANSI CUT A8
RXNJE8461XL	18 Gauge	HPPE/Polyester/ Spandex/ Tungsten Wire	Nitrile	Foamed	NO	YES	XL	EN388 4X42F, ANSI CUT A8

SKU	Knitting Technology	Knitting Material	Coating Material	Coating Texture	Includes Reinforced Thumb Crotch	Touchscreen Compatible	Size	Protective Performance
RXYZZ5192S	15 Gauge	HPPE/Steel Wire	NO	NO	NO	NO	S	EN388 2X41D ANSI CUT A4
RXYZZ5192M	15 Gauge	HPPE/Steel Wire	NO	NO	NO	NO	M	EN388 2X41D ANSI CUT A4
RXYZZ5192L	15 Gauge	HPPE/Steel Wire	NO	NO	NO	NO	L	EN388 2X41D ANSI CUT A4
RXYZZ5192XL	15 Gauge	HPPE/Steel Wire	NO	NO	NO	NO	XL	EN388 2X41D ANSI CUT A4

Product Features

- Breathable
- Flexible
- Cut resistant
- Touch screen

Mechanic's Gloves

Mechanics- and riggers-style gloves protect hands from dirt, grime, scrapes, and blisters. They have good dexterity and tactility and are often worn when performing basic tasks in general maintenance and repair operations, including handling boxes, stocking warehouses, performing carpentry work, and working on cars and machinery.



• RX8256DQSL

SKU	Knitting Technology	Knitting Material	Coating Material	Coating Texture	Includes Reinforced Thumb Crotch	Touchscreen Compatible	Size	Protective Performance
RX8256DQSS	18 Gauge	HPPE/Nylon/Spandex/TPR	Nitrile	Microfoam Washed	YES	YES	S	EN388 4X42DP, ANSI CUT A4
RX8256DQSM	18 Gauge	HPPE/Nylon/Spandex/TPR	Nitrile	Microfoam Washed	YES	YES	M	EN388 4X42DP, ANSI CUT A4
RX8256DQSL	18 Gauge	HPPE/Nylon/Spandex/TPR	Nitrile	Microfoam Washed	YES	YES	L	EN388 4X42DP, ANSI CUT A4
RX8256DQSL	18 Gauge	HPPE/Nylon/Spandex/TPR	Nitrile	Microfoam Washed	YES	YES	XL	EN388 4X42DP, ANSI CUT A4

Product Features

- CE Level D cut resistance protection with super lightweight.
- Steel fiber and glass fiber free.
- High tactile sensitivity thanks to 18 gauge knitted liner.
- Filament fiber knitted liner.int-free surface brings sikyand cool touch feeling.
- Strong grip with durable and breathable micro foam nitrile coating on palm.

Chemical-Resistant Gloves

Chemical-resistant gloves are made of rubber polymers that withstand exposure to liquid chemicals such as acids, oils, and solvents.

Prevent liquid and chemical leakage, ensuring advanced protection during handling.

Coating provide exceptional grip for handling oily or wet materials with ease.

- Prevent liquid and chemical leakage, ensuring advanced protection during handling.

- Fully coating
- Strong grip
- flexible
- Comfortable
- Chemical protection



- Coating provide exceptional grip for handling oily or wet materials with ease

• RXNLX8009

SKU	Knitting Technology	Knitting Material	Coating Material	Coating Texture	Glove Length	Color (Knit/Coating)	Size	Protective Performance
RXNLX8007	18 Gauge	Nylon	Nitrile	Textured	35cm	Yarn Color: White Palm Color: Blue+Black	7	N388 4121A EN ISO 374-1AJKLMNOPT ANSI CUT A1 EN407:2020 X1XXXX
RXNLX8008	18 Gauge	Nylon	Nitrile	Textured	35cm	Yarn Color: White Palm Color: Blue+Black	8	N388 4121A EN ISO 374-1AJKLMNOPT ANSI CUT A1 EN407:2020 X1XXXX
RXNLX8009	18 Gauge	Nylon	Nitrile	Textured	35cm	Yarn Color: White Palm Color: Blue+Black	9	N388 4121A EN ISO 374-1AJKLMNOPT ANSI CUT A1 EN407:2020 X1XXXX
RXNLX80010	18 Gauge	Nylon	Nitrile	Textured	35cm	Yarn Color: White Palm Color: Blue+Black	10	N388 4121A EN ISO 374-1AJKLMNOPT ANSI CUT A1 EN407:2020 X1XXXX
RXNLX80011	18 Gauge	Nylon	Nitrile	Textured	35cm	Yarn Color: White Palm Color: Blue+Black	11	N388 4121A EN ISO 374-1AJKLMNOPT ANSI CUT A1 EN407:2020 X1XXXX

Cold-Condition Gloves

Cold-condition gloves products engineered to provide reliable warmth retention and comfort in low-temperature environments. Designed to address the challenges of cold exposure, these gloves prioritize insulation performance while balancing flexibility for practical use.



◀ RXLKX970S-XL ▶

• Full latex double coating provides a superior grip in dry, wet and oily conditions.

• Heating acrylic terry fleeced liner is softer and warmer in cold environment.



• Fully thumb coating provides better resistance to dirt and abrasion.

• Excellent resistance to liquid permeation.

• Excellent heat retention.

RXLBX2027S-XL ▶

SKU	Knitting Technology	Knitting Material	Coating Material	Coating Texture	Color (Knit/Coating)	Size	Protective Performance
RXLBX2027S	10 Gauge	Acrylic	Latex	Textured	Orange/Black	S	EN388 2142X EN511 2006:X2X
RXLBX2027M	10 Gauge	Acrylic	Latex	Textured	Orange/Black	M	EN388 2142X EN511 2006:X2X
RXLBX2027L	10 Gauge	Acrylic	Latex	Textured	Orange/Black	L	EN388 2142X EN511 2006:X2X
RXLBX2027XL	10 Gauge	Acrylic	Latex	Textured	Orange/Black	XL	EN388 2142X EN511 2006:X2X
RXLKX970S	15 Gauge	Nylon / Acrylic	Latex	Textured	Blue/Black	S	EN388 2232X EN511:2006:X2X
RXLKX970M	15 Gauge	Nylon / Acrylic	Latex	Textured	Blue/Black	M	EN388 2232X EN511:2006:X2X

SKU	Knitting Technology	Knitting Material	Coating Material	Coating Texture	Color (Knit/Coating)	Size	Protective Performance
RXLKX970L	15 Gauge	Nylon / Acrylic	Latex	Textured	Blue/Black	L	EN388 2232X EN511:2006:X2X
RXLKX970XL	15 Gauge	Nylon / Acrylic	Latex	Textured	Blue/Black	XL	EN388 2232X EN511:2006:X2X

Overshoes

Safety-toe overshoes, toe caps, and disposable shoe covers are all protective gear donned over ordinary shoes or boots for temporary or short-term use, safeguarding both feet and footwear. These protective items are primarily used by visitors, inspectors, or individuals who don't require regular access to full-time safety footwear, offering targeted protection for specific scenarios.

- **Waterproof & Liquid-Resistant**– Protects against spills and wet surfaces.
- **Breathable**–Reduces sweating and discomfort during extended wear.
- **Lightweight & Flexible**–Ensures ease of movement.
- **Disposable & Hygienic**–Single-use design prevents cross-contamination.
- **Latex-Free & Non-Toxic**– Safe for users with latex allergies.



- **Elastic Ankle Design**– Stretchable cuffs provide a secure fit for most shoe sizes.

RSB1600 ▲

SKU	Material	Closure Type	Color	Length	Size	Fits Footwear Size
RSB1600L	SMS	Elastic	White	16.5"	L	6-11
RSB1600XL	SMS	Elastic	White	17.7"	XL	12-15

Raxwell®

Jan/San

- CLEANING BUCKETS
WRINGERS
- MOPS, HEADS & HANDLES
- BRUSHES, BROOMS &
DUST PANS
- WASTE RECEPTACLES
- MICROFIBER CLOTHS &
TOWELS



CLEANING AND WASTE
MANAGEMENT SYSTEMS FOR
HYGIENE-CRITICAL SPACES



Cleaning Buckets

Mop bucket and wringer systems feature a down-press wringer that provides an ergonomic alternative to side-press wringers.



RJD3000 ▲



RJD3001 ▲



RJD3002 ▲



RJF1014 ▲

· Ergonomic Design and Handle

· Large Capacity Is Suitable For Many Scenarios.

· Tough & Durable Plastic.

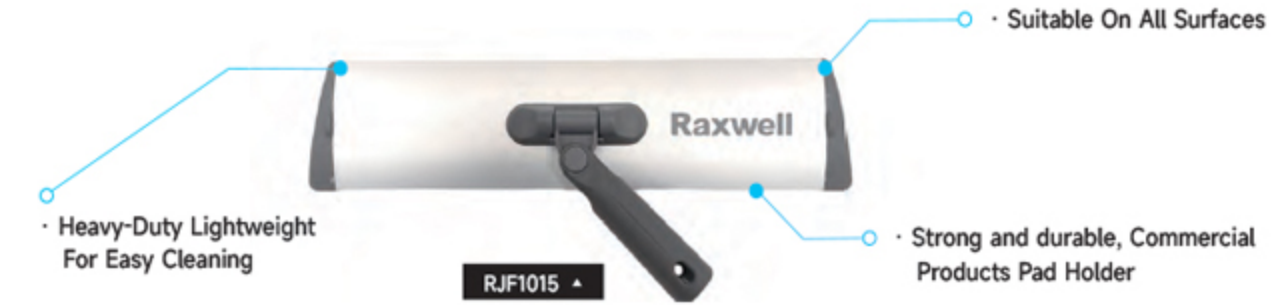
SKU	Product Name	Material	Capacity(QT)	Overall Width(incn)	Overall Height(inch)	Graduated Markings	Color
RJD3000	10 QT. Utility Bucket	Polypropylene+Metal	10	12.6	10.24	Yes	Gray
RJD3001	3 qt. Red Sanitizing Bucke	Low Density Polyethylene+Metal	3	7.09	6.02	No	Red
RJD3002	3 qt. Green Cleaning Bucket	Low Density Polyethylene+Metal	3	7.09	6.02	No	Green
RJF1014	Microfiber Finish Bucket w/ Strainer,6 gallon, Gray	Polypropylene	6	10.63	17.32	Yes	Gray+Black

Mops, Heads & Handles

Mops are used for floor cleaning. The material of the head includes microfibers (with strong water absorption) or sponge. The handle can be extended or fixed to adapt to different scenarios. For example, the rotating mop combines water extraction and cleaning functions, and the head is detachable and replaceable



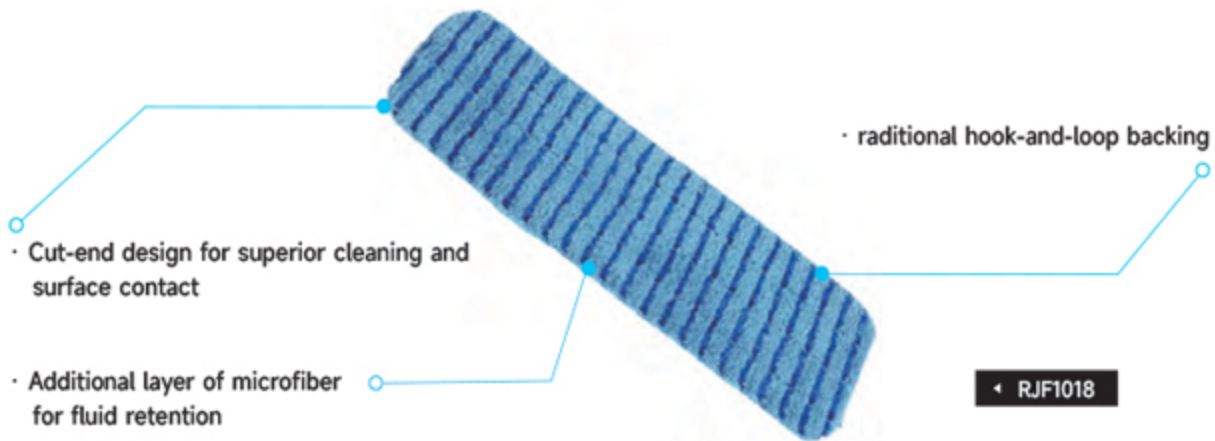
RJF1016 ▲



SKU	Product Name	Material	Overall Width(inch)	Overall Depth(inch)	Color
RJF1015	Flat Microfiber Mop Base for 18 in. Pads; aluminum and polypropylene, SWIVEL BASE	Alumi Num+ABS	15.75	6.38	Gray+Blac
RJF1016	Flat Microfiber Mop Base for 24 in. Pads; aluminum and polypropylene, SWIVEL BASE.	Alumi Num+ABS	21.35	6.5	Gray+Blac



SKU	Product Name	Tip Material	Handle Length(inch)	Handle Color
RJF1017	Professional 37.99"-58.66" Aluminum Wet Mop Extendable Handle, Microfiber Head	Polypropylene	37.99-58.66	Gray+Black
RJF1090	60" Wood Dust Mop Handle Heavy Duty Clip-On	Iron Frame	60	Natura
RJF1070	Mop Handles	Polypropylene	62	Gray
RJF1071	Mop Handles	Polypropylene	60	Natura

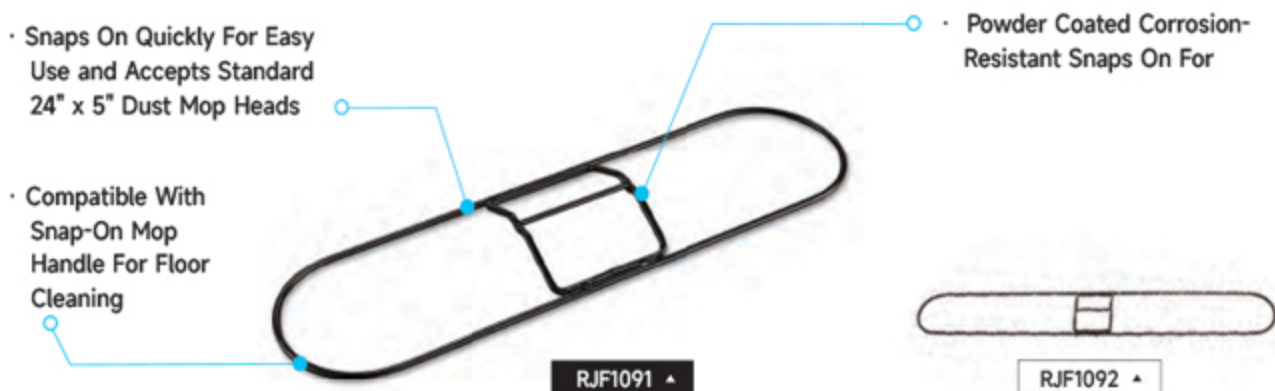


SKU	Product Name	Material	Width(inch)	Depth(inch)
RJF1018	24"Scrubber Mop Pad Microfiber Blended	80% Polyester, 20% Polyamide	24	5
RJF1019	18" Microfiber Scrubbing Mop; Green	Polyester+Polyamide	18	5
RJF1020	18"Scrubber Mop Pad Microfiber Blended	80% Polyester, 20% Polyamide	18	5
RJF1021	18"Scrubber Mop Pad Microfiber Blended	80% Polyester, 20% Polyamide	18	5
RJF1023	18"Scrubber Mop Pad Microfiber Blended	80% Polyester, 20% Polyamide	18	5
RJF1025	18"Mop Pad Microfiber+Polyester	80% Polyester, 20% Polyamide	18	5
RJF1027	18"Mop Pad Microfiber+Polyester	80% Polyester, 20% Polyamide	18	5
RJF1029	18"Mop Pad Microfiber+Polyester	80% Polyester, 20% Polyamide	18	5
RJF1031	18"Mop Pad Microfiber+Polyester	80% Polyester, 20% Polyamide	18	5

SKU	Product Name	Material	Width(inch)	Depth(inch)
RJF1032	18" Mop Pad Microfiber+Polyester	80% Polyester, 20% Polyamide	18	5
RJF1033	24" Mop Pad Microfiber+Polyester	90% Polyester, 10% Polyamide	24	5
RJF1083	24" Synergy Twist Dust Mops	70% Polyester, 20% Acrylic, 10% Rayon	24	5
RJF1084	36" Microfiber Canvas Backed Dust Mops	Polyester+Polyamide	36	7
RJF1085	48" Synergy Twist Dust Mops	70% Polyester, 20% Acrylic, 10% Rayon	48	5
RJF1086	18" Microfiber Hook- And-Loop Dust Mop Pad	88% Polyester, 12% Polyamide	18	6
RJF1087	24" Microfiber Hook-And-Loop Dust Mop Pad	88% Polyester, 12% Polyamide	24	6



SKU	Product Name	Material	Dry Weight	Mop End Type	Color
RJF1050	Wet Tube Microfiber Mop with Medium Canvas Headband, 400g, Blue.	Polyester+Polyamide	400g	Yes	Blue
RJF1051	Wet Tube Microfiber Mop with Large Canvas Headband, 500g, Green.	Polyester+Polyamide	500g	Yes	Green



SKU	Product Name	Material	Overall Width(inch)	Overall Depth(inch)	Color
RJF1091	Clip-On 24" X 5" Dust Mop Metal Frame	Metal	24	5	Black
RJF1092	Clip-On 36" X 5" Dust Mop Metal Frame	Metal	36	5	Black

Wringers

The finger water extraction device is often used to wring out the water from the mop head, improving the cleaning efficiency.



SKU	Product Name	Material	Capacity	Anti-spill	Bucket Color
RCF1001	Mop Bucket & Wringer Combo 35 QT.	Polypropylene+Metal And Springs	35QT	No	Yellow

Brushes, Brooms & Dust Pans

Brushes are used for surface polishing (such as in nylon brush cleaning machines), brooms are used to sweep away dust, and dustpans are used in conjunction to collect debris. Plastic dustpans are lightweight and durable, commonly found in household tools



SKU	Product Name	Material	Handle Length(inch)	Color
RJF1060	8 inch Angled Broom with 36 inch Handle	Polypropylene+ Iron Handle	36	Black



SKU	Product Name	Material	Handle Length(inch)	Width(inch)	Depth(inch)	Color
RJF2000	Upright 12" Dustpan With 36" Handle	Polypropylene+ Iron Handle	36	12	12	Black

Product Features

- Broom Bristles With Excellent Elasticity Can Adapt Flexibly To The Shape and Unevenness of Different Surfaces.
- Ergonomic Handle With an Angled Design Makes Sweeping Easier.
- Designed With an Angled Shape, Making It Convenient For Cleaning Corners.



SKU	Product Name	Material	Width(inch)	Depth(inch)	Color
RJF2002	12"Hd Plastic Dustpan With Hanger Slot	Polypropylene	11.42	11.81	Black

Product Features

- Heavy-Duty Plastic Withstands Rigors of Daily Use For Lasting Performance.
- Fine Front Edge Ensures Maximum Pickup of Small Particles and Debris.
- Large Main Compartment Prevents Frequent Trips To Trash Bin.
- Hang Hole Allows Easy Storage In Optimal Location For Quick Access.

Trash Can

Trash cans are used for storing waste and are mainly made of plastic (such as PP material). Their design focuses on capacity and portability.



SKU	Product Name	Material	Container Capacity	Overall width(inch)	Overall Height(inch)	Color
RMW2000BLK	Trash Can 7Gallon	Polypropylene	7	10.43	14.96	Black
RMW2003BL	Trash Can 7Gallon	Polypropylene	7	10.43	14.96	Blue
RMW2001GR	Trash Can 7Gallon	Polypropylene	7	10.43	14.96	Gray
RMW2006BLK	Trash Can 23Gallon	Polypropylene	23	11.22	29.84	Black
RMW2005BL	Trash Can 23Gallon	Polypropylene	23	11.22	29.84	Blue
RMW2008GR	Trash Can 23Gallon	Polypropylene	23	11.22	29.84	Gray

Microfiber Cloths & Towels

It has extremely strong water absorption and leaves no water marks or fiber residues, making it suitable for glass, cars, kitchens, etc. Its reusable feature (supporting machine wash) enhances environmental friendliness and cost-effectiveness, and dominates among best-selling products .

- Color coded for easy task identification and to help prevent cross-contamination

- Works great on a variety of surfaces. Reusable, launderable eco-friendly solution



- Requires less water and chemicals than traditional cloths

◀ RJC1004



RJC1000 ▲



RJC1001 ▲



RJC1002 ▲



RJC1003 ▲



RJC1005 ▲



RJC1006 ▲



RJC1008 ▲



RJC1009 ▲



RJC1010 ▲

SKU	Product Name	Material	Size(inch)	Cleaning cloth Density(g/sq m)	Cleaning Cloth Color
RJC1000	Microfiberglass Cleaning Cloths	Polyester+Polyamide	14*14	230	Blue
RJC1001	Microfibercleaning Cloths	Polyester+Polyamide	16*16	290	green
RJC1002	Microfibercleaning Cloths	Polyester+Polyamide	16*16	290	Blue
RJC1003	Microfibercleaning Cloths	Polyester+Polyamide	16*16	290	Red
RJC1004	Microfibercleaning Cloths	Polyester+Polyamide	16*16	290	Yellow
RJC1005	Microfibercleaning Cloths	Polyester+Polyamide	16*16	290	Pink
RJC1006	Microfiber All-Purpose Checkered Cloth	80% Polyester, 20% Nylon	13*15	/	Blue
RJC1008	Microfiber Premium Waffle Cloth	80% Polyester, 20% Polyamide	16*16	/	Blue
RJC1009	Microfiber Cloths In-A-Box Seamless Edges	88% Polyester, 12% Polymaide	12*12	190	Blue
RJC1010	Microfiber Cloths In-A-Box Seamless Edges	88% Polyester, 12% Polymaide	12*12	190	green

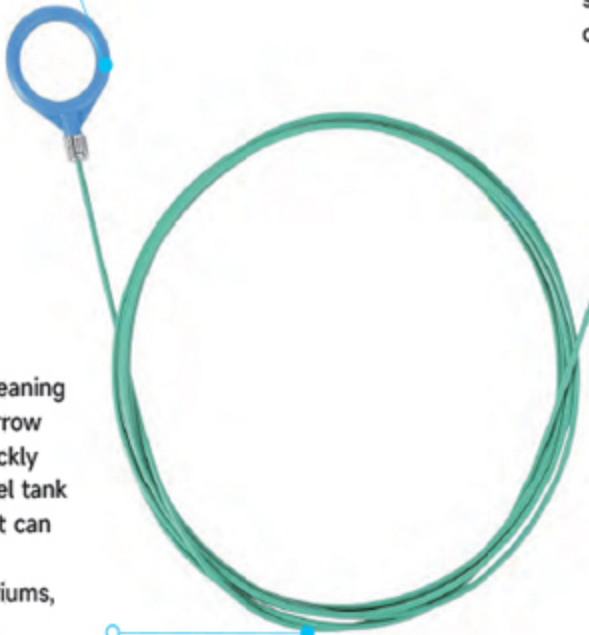
Cleaning Brushes

Pipe and tube brushes clean the inside and outside of pipe and tubing. These versatile brushes also scrub, debur, and clean inside hard-to-reach elbows, tees, valves, drains, machined cylinders, smooth and threaded blind holes, and gun barrels. Color-coded brushes are available to promote safe handling practices and minimize the risk of cross-contamination between work zones.

· **Excellent Design:** The drain brush adopts a double-excellent design, with rotating PBT bristles on one end to thoroughly and safely clean the delicate sunroof channel, and a round handle on the other end for a comfortable grip. Protect your vehicle's drainage system during maintenance.

· **Product Materials:** Our sunroof drain brushes are made of good-quality PVC and PBT materials, which are durable and not easy to break. In addition, the soft PVC tube and PBT bristles ensure that they will not scratch your car. You can use it with confidence.

· **Wide Application:** The cleaning tools can easily clean narrow pipes and is ideal for quickly cleaning car sunroofs, fuel tank drains, door drains, etc. It can also be used to clean refrigerator drains, aquariums, hoses and filter systems.



◀ RJT1300

SKU	Description	Color	Size	Material
RJT1300	Raxwell UltraReach Flexible Drain Brush	multicolor	118 in	pbt, iron, plastic

Product Features

- **Product Materials:** Our sunroof drain brushes are made of good-quality PVC and PBT materials, which are durable and not easy to break. In addition, the soft PVC tube and nylon bristles ensure that they will not scratch your car. You can use it with confidence.
- **Excellent Design:** The drain brush adopts a double-excellent design, with rotating PBT bristles on one end to thoroughly and safely clean the delicate sunroof channel, and a round handle on the other end for a comfortable grip. Protect your vehicle's drainage system during maintenance.
- **Wide Application:** The cleaning tools can easily clean narrow pipes and is ideal for quickly cleaning car sunroofs, fuel tank drains, door drains, etc. It can also be used to clean refrigerator drains, aquariums, hoses and filter systems.

Cleaning Tissues & Clothst

Lens cleaning wipes and tissues remove dust and dirt from safety glasses, goggles, face shields, and personal eyewear.



LW100AF ▲

SKU	Description	Color	Size	Basic Material	Package Quantity
LW100AF	Raxwell Eyeglasses Cleaner Wipes	White	4.7 x 5.9 in/pc	wet strength paper	100pcs/box

Product Features

- **Unmatched Clarity And Convenience:** Harness the power of science with Raxwell's expertly formulated lens wipes for eyeglasses. These pre-moistened eye glasses cleaner wipes eliminate fog, smudges, and fingerprints instantly, catering to your need for clear, unobstructed vision
- **Precision In Every Wipe:** Our lightly pre-moistened eyeglass cleaning wipes provide an instant, streak-free clean. These disposable glasses wipes ensure flawless vision and images, making them perfect lens cleaner wipes for those who seek precision and clarity
- **Universal Safety And Compatibility:** Raxwell lens wipes, effective as sunglass cleaner, are safe for all lenses and screens, including those with delicate coatings. Our formula ensures a streak-free, anti-static clean, keeping your eyewear pristine
- **Portability For Any Occasion:** Each eye glass cleaner wipe is individually wrapped, preserving its effectiveness and allowing for easy portability. Whether you're traveling, at work, or home, maintain spotless lenses or screens with these essential eye glass wipes

Raxwell®

Material Handling

- BUBBLE / FOAM
- ENVELOPES
- POLYBAGS
- POLY TUBING ROLL
- STRAPPING
- STRETCH WRAP / FILM
- TAPES
- TIES
- SHELVING

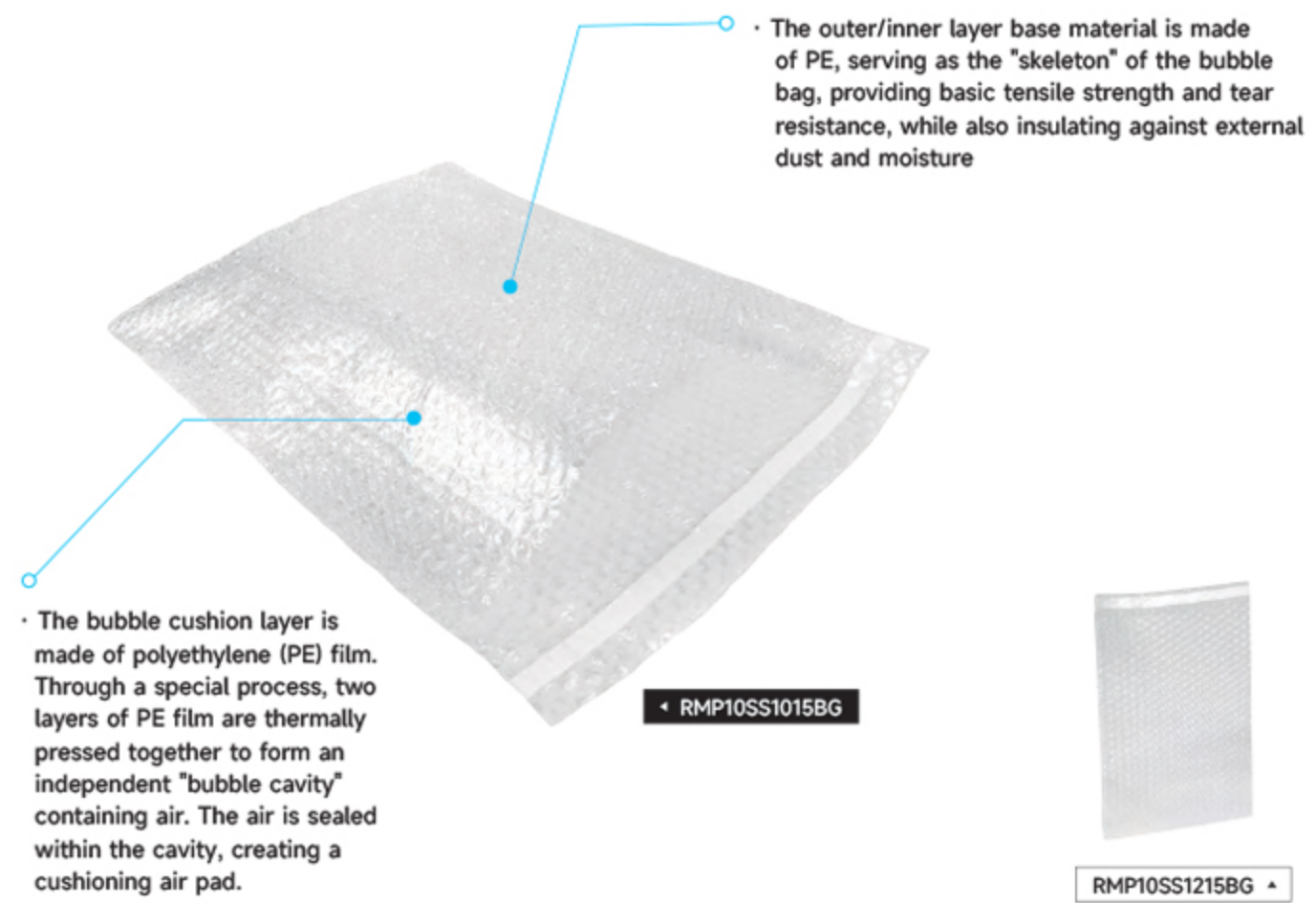


TOOLS AND EQUIPMENT THAT
STREAMLINE WAREHOUSE
AND LOGISTICS OPERATIONS.



Bubble / Foam

Widely used packaging material primarily made of polyethylene, a thermoplastic with excellent chemical stability, wear resistance, low density, and strong ductility. These characteristics make bubble wrap lightweight and durable. When an item is subjected to external impact, the air inside the bubble wrap is compressed, absorbing and dispersing the impact force, thus reducing the damage to the item. It provides excellent protection for fragile and easily damaged items. The low density of polyethylene material makes bubble wrap itself lightweight, easy to carry and transport, and also reduces the overall weight of the package, lowering transportation costs. It effectively blocks moisture and dust, protecting the internal items from contamination and dampness, and maintaining the dryness and cleanliness of the items.



SKU	Insize W x L	Color	Material	Applications	Compliance Standards
RMP10SS1215BG	12 x 15 1/2"	Clear	LDPE	Recommended for electronic products, plastic products, metal products, ceramic products, glass products and other items that require cushioning protection.	N/A
RMP10SS1015BG	10 x 15 1/2"	Clear	LDPE		N/A

Product Features

- Buffer and shock resistant to prevent product damage
- Waterproof, moisture-proof, and pressure resistant

Envelopes

Envelopes are bag-like containers used to enclose letters, documents, small items, etc., serving the functions of protecting the contents, facilitating delivery, and identifying information. They are widely used in daily communication, business exchanges, logistics packaging, and other scenarios. The back of the packing list envelope is sticky and can be pasted on the outside of a package or container to store shipping documents. This ensures that the recipient can easily access and view invoices, packing lists, safety data sheets, and other important documents. They provide the best alternative for placing documents inside packages or containers and reduce the risk of document damage, loss, or disposal. Packing list envelopes can be used for boxes, cartons, mailing packaging, tubular objects, and large envelopes.



SKU	Outside Dimensions	Inside Dimensions	Color	Material	Applications
RMP40SIDE912	9 1/2 x 12"	9 x 11 1/2"	Clear	CPE	Recommend transportation packaging for logistics documents and other files.
RMP40EP45	5 1/2 x 10"	5 x 9 1/2"	Red	CPE	
RMP40FLAG45	4 1/2 x 5 1/2"	4 x 5"	Clear/Red	CPE	
RMP40SIDE710	7 x 10"	6 1/2 x 9 1/2"	Clear	CPE	
RMP40E8089	7 1/2 x 5 1/2"	7 x 5"	Clear/White	CPE	

Product Features

- Simple sealing and flexible use.
- In a completely sealed state, it can effectively ensure that the items inside the bag are not contaminated, damp, or oxidized, making it safer and more hygienic.

Polybags

Polybags are packaging products primarily made from high molecular polymers. Due to their lightweight, durability, and low cost, they are widely used globally in various fields such as daily life, industrial production, and commercial trade. They are made from abundant raw materials, have a simple production process, and are significantly cheaper than packaging materials like paper and metal. They are lightweight, easy to transport and carry, and have high tensile strength, making them less prone to damage (especially for certain materials like HDPE). They can provide a certain level of protection against moisture and dust, safeguarding the contents inside (such as preserving food). Moreover, they can be made into various sizes and shapes to meet diverse packaging needs.



RMP9015SUF812 ▲

- **Adhesive:** Generally, environmentally friendly glues such as acrylate adhesive are used. This type of glue has good viscosity and meets food contact safety standards, ensuring no contamination to food.

- **Bag body material:** Typically, food-grade polyethylene (PE), polypropylene (PP), and other materials are used. Self-adhesive bags made of PE are soft and tough, non-toxic and odorless, with good flexibility and low temperature resistance; those made of PP have high transparency, good hardness, and strong chemical stability.

- **WARNING:**
Keep this bag away from babies and children. Do not use in cribs, beds, carriages or playpens. The thin film may cling to nose and mouth and prevent breathing.

ADVERTENCIA:

Mantenga esta bolsa fuera del alcance de bebés y niños. No lo use en cunas, camas, cochecitos o corralitos. La película delgada puede adherirse a la nariz y la boca e impedir la respiración.



RMP9015SUF1420 ▲



RMP9015SUF1114 ▲



RMP9015SUF69 ▲



RMP9015SUF912 ▲



RMP9015SUF810 ▲



RMP9015SUF410 ▲

SKU	Size W x L	Mil	Color	Material	Applications	Compliance Standards
RMP9015SUF812	8 x 12"	1.5	Clear	LDPE	Recommended for shirts and toys.	FDA
RMP9015SUF69	6 x 9"	1.5	Clear	LDPE		FDA
RMP9015SUF912	9 x 12"	1.5	Clear	LDPE		FDA
RMP9015SUF1420	14 x 20"	1.5	Clear	LDPE		FDA
RMP9015SUF1114	11 x 14"	1.5	Clear	LDPE		FDA
RMP9015SUF810	8 x 10"	1.5	Clear	LDPE		FDA
RMP9015SUF410	4 x 10"	1.5	Clear	LDPE		FDA

Product Features

- Items easily slip into poly bag.
- Peel off strip and fold lip to seal.
- Anti suffocation warning design. Message printed in English and Spanish.
- Self adhesive properties.



RMP9024CLZIP4 ▲



RMP9023CLZIP6 ▲



RMP901012CLZIP6 ▲

SKU	Size W x L	Mil	Color	Material	Applications	Compliance Standards
RMP9024CLZIP4	2 x 4"	4	Clear	LDPE	Recommended for T-shirts and small volume parts products.	FDA
RMP9023CLZIP6	2 x 3"	6	Clear	LDPE		FDA
RMP901012CLZIP6	10 x 12"	6	Clear	LDPE		FDA

Product Features

- Good flexibility.
- Soft to the touch.
- Simultaneously possessing moisture-proof, waterproof, dustproof and other properties, it can effectively protect the contents.
- The bag has a certain degree of transparency, making it easy to view the contents inside.



RMP901616CLZIP3 ▲



RMP901820CLSLZIP3 ▲

SKU	Size W x L	Mil	Color	Material	Applications	Compliance Standards
RMP901616CLZIP3	16 x 16"	3	Clear	LDPE	Recommended for T-shirts and small volume parts products.	FDA
RMP901820CLSLZIP3	18 x 20"	3	Clear	LDPE		FDA

Product Features

- Durable and reusable.
- Easy open, easy close.
- Bags are pre-opened for quick handling.



RMP9024CLZIP4 ▲



RMP9023CLZIP6 ▲



RMP901012CLZIP6 ▲

SKU	Size W x L	Mil	Color	Material	Applications	Compliance Standards
RMP902448CLZIP4	24 x 48"	6	Clear	LDPE	Recommended for shipping parts, clothing or protecting food.	FDA
RMP90810CLFL2	8 x 10"	2	Clear	LDPE		FDA
RMP902224CLFL2	22 x 24"	2	Clear	LDPE		FDA

Product Features

- 100% virgin high clarity polyethylene film.

Poly Tubing Roll

Poly Tubing Roll is a continuous tubular plastic packaging material, typically supplied in roll form, featuring flexibility and customizable cutting. It is widely used for various packaging needs. The main material is low-density polyethylene (LDPE): it is softer and has good ductility, making it suitable for packaging items with irregular shapes or requiring a certain degree of elastic wrapping. It has a continuous tubular structure with no pre-sealed ends (both ends are open), and its length ranges from a few meters to tens of meters. Rolled into a cylindrical shape, it is convenient for storage and use. Poly Tubing Roll, with its flexibility of "cutting on demand", good protective properties, and cost advantages, has become an efficient packaging solution in industrial, logistics, daily storage, and other scenarios.



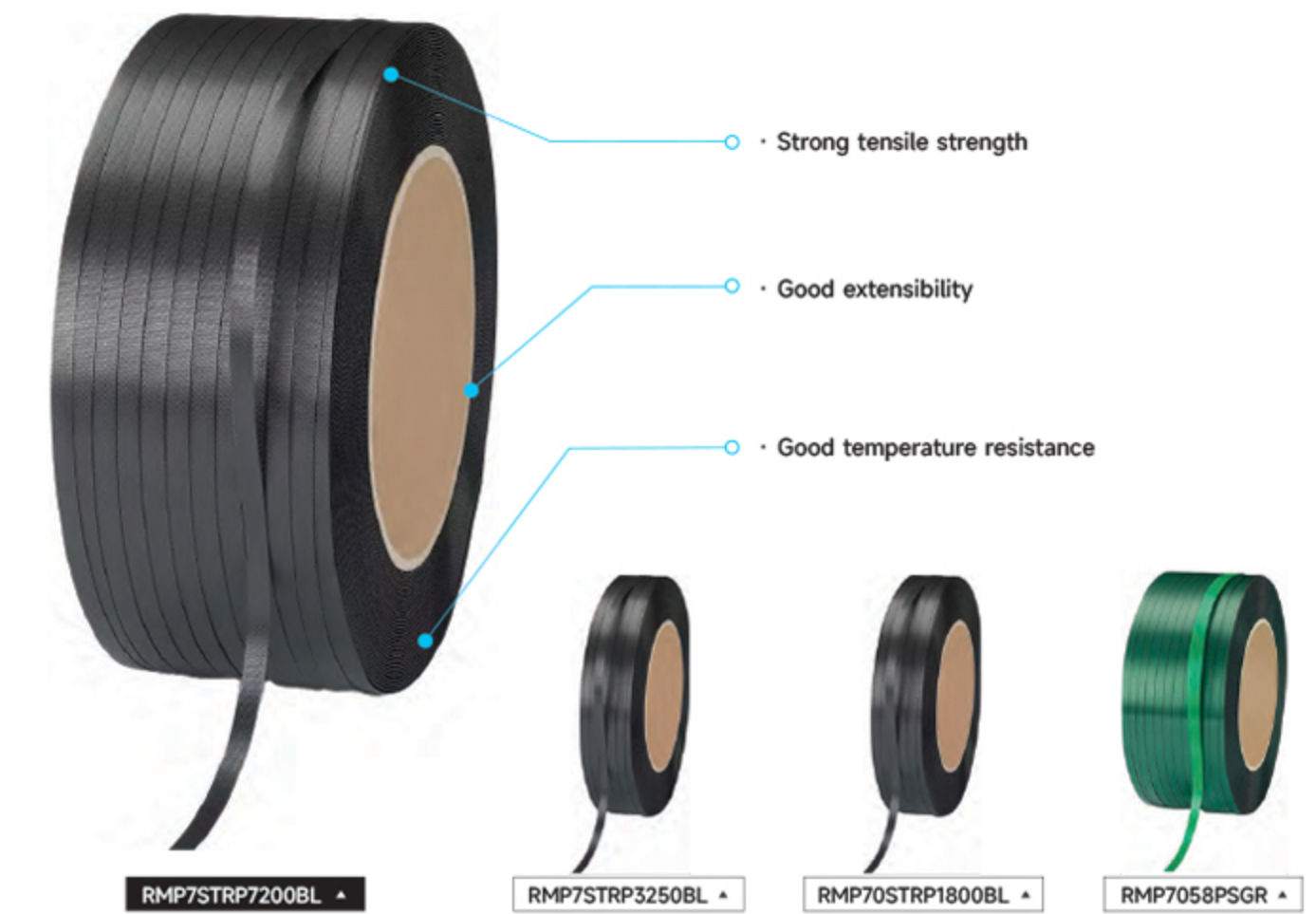
SKU	Roll Size	Mil	Roll converts	Color	Material	Applications	Compliance Standards
RMP901RL750CL4	1" x 750'	4	From 1" to 3" core	Clear	MLDPE	Recommended for use with Poly Tubing Dispenser.	FDA
RMP908RL1500CL4	8" x 1,500'	4	From 1" to 3" core	Clear	MLDPE		FDA
RMP9012RL1500CL4	12" x 1,500'	4	From 1" to 3" core	Clear	MLDPE		FDA
RMP9010RL1500CL4	10" x 1,500'	4	From 1" to 3" core	Clear	MLDPE		FDA
RMP903RL1500CL4	3" x 1,500'	4	From 1" to 3" core	Clear	MLDPE		FDA

Product Features

- Roll converts from 1" to 3" core.
- Eliminates the need to stock an expensive variety of bags.

Strapping

Strapping is used to secure packages and boxes during transportation, storage, and packaging operations to protect them during transportation or to maintain their orderliness and safety during storage. They serve as a means of securing items in various applications. Polypropylene strapping (sometimes referred to as poly strapping) is a lightweight strap used for light-duty applications, such as bundling newspapers, sealing and bundling cardboard boxes, and securing small cargo items.



SKU	Width	Thickness	Break Strength	Length	Color	Material	Applications
RMP7STRP3250BL	1/2"	0.028	820 lbs.	3,250'	Black	Polyester	Recommended for use in brick factories, stone, wood, cotton spinning, aluminum ingots and other fields, suitable for packaging and fixing various heavy objects.
RMP70STRP1800BL	5/8"	0.03	1,100 lbs.	1,800'	Black	Polyester	
RMP7STRP7200BL	1/2"	.024"	500 lbs.	7,200'	Black	Polyester	
RMP7058PSGR	5/8"	0.035	1,400 lbs.	4,200'	Green	Polyester	

- Product Features**
- Strong tensile strength.
 - Good extensibility.
 - Good temperature resistance

Stretch Wrap / Film

Stretch wrap rolls have a continuous length of plastic that is wrapped around the sides of a pallet or bundle to protect the package from dust and moisture, prevent and indicate tampering, and keep items together. General purpose stretch wrap is used in most everyday applications and can be applied using wrapping machines or by hand. High-performance wrap provides high strength and puncture resistance and is thinner than other wraps. Product-concealing wrap is difficult to see through to maintain privacy and hide product labels of expensive or valuable items. Color coding and printed message wrap indicate at a glance how a product should be handled, shipped, or stored. Antistatic wrap protects electronics from static discharge. Breathable stretch wrap, also called pallet netting, is used to secure items to pallets and has holes or vents so air can circulate around the product.



RMP5SF4R70G ▲

• Multiple colors available: Green/Blue/Orange/Red/Black/Yellow/Clear, Meet users' needs for color differentiation

• The core substrate is made of linear low-density polyethylene (LLDPE), which provides the core tensile strength and toughness, ensuring that it is not easy to break during winding, and can maintain tension after winding to prevent the goods from loosening



RMP5SF1R80G ▲



RMP5SF1R70G ▲

SKU	Size	Gauge	Color	Material	Applications
RMP5SF4R70G	18" x 1,500'	70	Clear	LLDPE	Recommended for carton and non-standard goods.
RMP5SF1R80G	20" x 6,000'	80	Clear	LLDPE	
RMP5SF1R70G	20" x 6,000'	70	Clear	LLDPE	

Product Features

- Resists puncturing and tearing, even around sharp corners.
- 70/80 gauge.



RMP5HW4R80GR ▲



RMP5HW4R80BLU ▲



RMP5HW4R80BLK ▲



RMP5HW4R80YEL ▲



RMP5HW4R80OR ▲



RMP5HW4R80R ▲

SKU	Size	Gauge	Color	Material	Applications
RMP5HW4R80GR	18" x 1,500'	80	Green	LLDPE	Recommended for packaging various goods, including electronic appliances, automotive parts, hardware tools, building materials, chemical products.
RMP5HW4R80BLU	18" x 1,500'	80	Blue	LLDPE	
RMP5HW4R80OR	18" x 1,500'	80	Orange	LLDPE	
RMP5HW4R80R	18" x 1,500'	80	Red	LLDPE	
RMP5HW4R80BLK	18" x 1,500'	80	Black	LLDPE	
RMP5HW4R80YEL	18" x 1,500'	80	Yellow	LLDPE	

Product Features

- Colorful and easy to identify and manage.
- Easy to stretch and wrap, convenient for wrapping products of various shapes and sizes.



RMP50803R ▲



RMP50803BL ▲



RMP50803GR ▲



RMP50803BLK ▲



RMP50803YEL ▲



RMP50803WH ▲



RMP50805R ▲



RMP50805BL ▲



RMP50805GR ▲



RMP50805BLK ▲



RMP50805YEL ▲



RMP50805WHT ▲



RMP50803CL ▲



RMP50805CL ▲

SKU	Size	Core	Gauge	Color	Material	Applications
RMP50803R	3" x 1,000'	1"	80	Red	LDPE	Recommended for manual packaging, with simple and convenient operation, suitable for small items or small batch packaging needs.
RMP50803BL	3" x 1,000'	1"	80	Blue	LDPE	
RMP50803GR	3" x 1,000'	1"	80	Green	LDPE	
RMP50803BLK	3" x 1,000'	1"	80	Black	LDPE	
RMP50803YEL	3" x 1,000'	1"	80	Yellow	LDPE	
RMP50803WH	3" x 1,000'	1"	80	White	LDPE	
RMP50805R	5" x 1,000'	1"	80	Red	LDPE	
RMP50805BL	5" x 1,000'	1"	80	Blue	LDPE	
RMP50805GR	5" x 1,000'	1"	80	Green	LDPE	
RMP50805BLK	5" x 1,000'	1"	80	Black	LDPE	
RMP50805YEL	5" x 1,000'	1"	80	Yellow	LDPE	
RMP50805WHT	5" x 1,000'	1"	80	White	LDPE	
RMP50803CL	3" x 1,000'	1"	80	Clear	LDPE	
RMP50805CL	5" x 1,000'	1"	80	Clear	LDPE	

Product Features

- Ultra thin design.
- Strong adhesion.
- Good stretch ratio.
- Strong puncture resistance.

Tapes

Tapes are a functional material consisting of a substrate, adhesive, and release material (for some types). It achieves functions such as pasting, fixing, sealing, and wrapping items through its viscosity, and is widely used in various fields such as industry, home, office, and packaging. Tape can be single-sided or double-sided, used for temporary or permanent applications to seal, repair, wrap, connect, install, mask, and protect equipment and surfaces. Depending on its purpose, material, or adhesive type, tapes can be divided into various categories. When selecting, it is necessary to consider the specific purpose, the characteristics of the adherend, and environmental conditions to achieve the best results.

- The base material is PVC film coated with rubber-based pressure-sensitive adhesive. This adhesive tape exhibits good adhesion and wear resistance



RMP1007SIL ▲

- Easily mark off walls, floors or stairs in hazardous areas

SKU	Size	Mil	Color	Material	Applications
RMP1012RED	3" x 60'.	5	Black/Red	PVC	Recommended for walls, floors or stairs.

Product Features

- Easily mark off walls, floors or stairs in hazardous areas.



SKU	Size	Mil	Color	Material	Applications
RMP1003BLK/GR	2" x 60 yds.	33.5	Black/Green	Luminous Strip, PET Leather Material, Quartz Sand, Acrylic Oil Glue	Recommended for stairs, corridors, passages, swimming pools, kindergartens, schools, stations, subway stations, ports, hotels, clubs, kitchens, bathrooms and other places.

Product Features

- Luminous Anti-Slip Tape good flexibility, hand tear.
- Can fit on different surfaces.
- Full color.
- Oil-based glue: not easy to crack in winter, not easy to overflow in summer.



RMP6MASK160R ▲



RMP6MASK260YEL ▲

SKU	Size	Mil	Color	Material	Applications
RMP6MASK160R	1" x 60 yds.	4.6	Red	Wrinkle Paper, Natural Rubber	Recommended for automobiles and ships, electronic manufacturing industry, Furniture and plastic products and Construction and decoration.
RMP6MASK260YEL	2" x 60 yds.	4.6	Yellow	Wrinkle Paper, Natural Rubber	

Product Features

- Precise masking
- Easy to tear stickers and remove
- High temperature resistance and chemical resistance
- Flexibility and Conformity
- Environmental Protection and Safety
- Easy to tear: No tools needed, can be torn along the paper grain direction with bare hands, easy to operate
- No residual adhesive: Tear off no adhesive residue at room temperature to protect the surface of the adhered object from cleaning (corresponding models should be selected for special high-temperature scenarios)



RMP603SEALC-RMP602SEALC ▲



RMP603ESEALC-RMP602ESEALC ▲

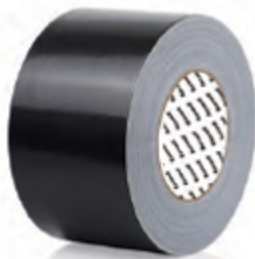
SKU	Size	Mil	Color	Material	Applications
RMP603SEALC	3" x 110 yds.	2.0	Clear	OPP	Recommended for carton.
RMP602SEALC	2" x 110 yds.	2.0	Clear	OPP	
RMP603ESEALC	3" x 110 yds.	2.0	Clear	OPP	
RMP602ESEALC	2" x 110 yds.	2.0	Clear	OPP	

Product Features

- Aggressive hot melt adhesive instantly sticks to corrugated cartons.
- Seals tight so your packages stay protected.
- Dispenses quickly. Seal more cartons in less time.
- Performs in temperatures of 30° to 140° F.



RMP603DUCTS ▲



RMP603DUCTBK ▲



RMP603DUCTW ▲

SKU	Size	Mil	Color	Material	Applications
RMP603DUCTS	3" x 60 yds	10	Silver	PE, Fiber Cloth, Synthetic Rubber	Recommended for carton sealing, carpet joint assembly, heavy-duty bundling, waterproof packaging.
RMP603DUCTBK	3" x 60 yds	10	Black	PE, Fiber Cloth, Synthetic Rubber	
RMP603DUCTW	3" x 60 yds	10	White	PE, Fiber Cloth, Synthetic Rubber	

Product Features

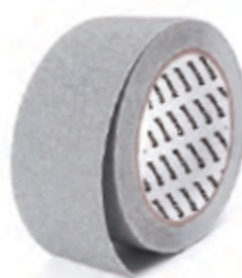
- Super strong adhesion and holding force.
- High tensile strength.
- Waterproof, moisture-proof, and weather resistant.
- Wear resistance and puncture resistance.
- Chemical resistance.



RMP1004BLK ▲



RMP1006BLK/YEL ▲



RMP1008GRAY ▲

SKU	Size	Mil	Color	Material	Applications
RMP1004BLK	2" x 60 yds.	33.5	Black	PVC Leather, Quartz Sand, Acrylic Oil Adhesive	Recommended for stairs and bathroom.
RMP1006BLK/YEL	2" x 60 yds.	33.5	Black/Yellow	PVC Leather, Quartz Sand, Acrylic Oil Adhesive	
RMP1008GRAY	2" x 60'.	22	Gray	PEVA Leather, Acrylic Oil Glue	

Product Features

- Super strong adhesion and holding force.
- High tensile strength.
- Waterproof, moisture-proof, and weather resistant.
- Wear resistance and puncture resistance.
- Chemical resistance.

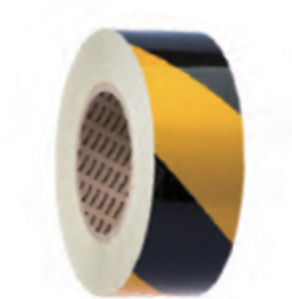


RMP1007SIL ▲

SKU	Size	Mil	Color	Material	Applications
RMP1007SIL	2" x 60 yds.	6.3	Silver	Aluminum Foil, Acrylic Oil Glue, Release Paper	Recommended for use in refrigerators, freezers, refrigeration equipment, insulation of central air conditioning ducts, and shielding and anti-interference of electronic products.

Product Features

- Physical properties (lightweight and tough material, smooth and conductive surface, strong weather resistance).
- Electrical performance (outstanding electromagnetic shielding performance, dual functions of conductivity and thermal conductivity).
- Adhesive performance (strong adhesion and retention, wide temperature resistance range).
- Chemical properties (chemical corrosion resistance, environmental protection and safety).
- Processing and usage performance (easy cutting and construction, excellent sealing).



RMP1009BLK/YEL ▲

SKU	Size	Mil	Color	Material	Applications
RMP1009BLK/YEL	2" x 10 yds.	5.5	Black / Yellow	PET, Synthetic Rubber	Recommended for road traffic, construction sites, warehouse management, factory production, and other occasions that require isolation and warning.

Product Features

- Optical performance: high reflective efficiency and visibility.
- Physical properties: durability and processing adaptability.
- Adhesive performance: firm adhesion and applicability.
- Environmental and Safety Performance: Environmental Protection and Functional Expansion.

Ties

Ties are a type of tool used for bundling, securing, and tightening items. Due to their ease of operation, low cost, and strong applicability, they are widely used in various fields such as industry, agriculture, logistics, and daily life. Made of nylon 66 (PA66), they exhibit good toughness, temperature resistance, and corrosion resistance. The structure is simple, typically consisting of a body (with serrated pattern) and a head (with a buckle), which achieves bundling through one-way tightening. Once fastened, it is difficult to loosen (some releasable models have unlocking devices). Ties are a basic yet indispensable tool that meets various bundling and securing needs, ranging from daily chores to industrial production, through diverse designs in material and structure. When selecting, factors such as load-bearing capacity, environment, and cost should be considered to achieve efficient and safe use.



SKU	Length	Width	Tensile Strength	Color	Material	Applications
RMP901140NAT	11"	.14"	40 lbs.	Natural	Nylon 6.6	Recommended for Electronic factories, mechanical equipment, ships, agriculture, horticulture and other fields.
RMP901250NAT	12"	.19"	50 lbs.	Natural	Nylon 6.6	
RMP90750NAT	7"	.19"	50 lbs.	Natural	Nylon 6.6	
RMP901250BLK	12"	.19"	50 lbs.	Black	Nylon 6.6	

Product Features

- Equipped with anti retreat function, the tighter it is pulled.
- Can effectively save work time and improve work efficiency.

Shelving

Shelving is a facility used for storing, displaying, and organizing items, widely applied in homes, offices, stores, warehouses, and other places. The type of shelving is determined based on the usage location and purpose; considering the weight, size, and quantity of stored items, shelves with appropriate load-bearing capacity and dimensions are selected; combined with the decoration style and color matching of the surrounding environment, shelves with beautiful appearance and coordination with the environment are chosen.



RMS101818CR ▲



RMS182434CR ▲



RMS182454CR ▲



RMS182463CR ▲



RMS182472CR ▲



RMS183672CR ▲



RMS242472CR ▲



RMS243672CR ▲



RMS244872CR ▲

SKU	Dimensions W x D x H	Shelf CAP. (LBS.)	Shelf	Color	Material	Applications	Compliance Standards
RMS184872CR	48" x 18" x 70"	550 lb.	4	Chrome	Chrome-plated Carbon Steel	Recommended for office, hotel and courier storage.	NSF
RMS101818CR	17" x 10" x 18"	220 lb.	3	Chrome	Chrome-plated Carbon Steel		NSF
RMS182434CR	24" x 18" x 34"	550 lb.	2	Chrome	Chrome-plated Carbon Steel		NSF
RMS182454CR	24" x 18" x 54"	550 lb.	4	Chrome	Chrome-plated Carbon Steel		NSF
RMS182463CR	24" x 18" x 64"	550 lb.	4	Chrome	Chrome-plated Carbon Steel		NSF
RMS182472CR	24" x 18" x 70"	550 lb.	4	Chrome	Chrome-plated Carbon Steel		
RMS183672CR	36" x 18" x 70"	550 lb.	4	Chrome	Chrome-plated Carbon Steel		NSF
RMS242472CR	24" x 24" x 70"	550 lb.	4	Chrome	Chrome-plated Carbon Steel		NSF
RMS243672CR	36" x 24" x 70"	550 lb.	4	Chrome	Chrome-plated Carbon Steel		NSF
RMS244872CR	48" x 24" x 70"	550 lb.	4	Chrome	Chrome-plated Carbon Steel		NSF

Product Features

- **Unique structure:** It is composed of carbon steel chrome plated mesh and pillars, with a unique shape structure that is cleverly designed, easy to install and remove, clean and bright. The sturdy carbon steel chrome plated mesh can promote air circulation, reduce dust accumulation, and the open design makes storage visible at a glance.
- **Flexible and versatile:** Each inch of the pillar has a groove circle, and the height of the mesh can be adjusted freely (increasing or decreasing per inch). Can be freely combined according to actual needs.
- **Widely applicable:** can meet the needs of any space and form a series of products for different purposes, such as office series, shopping mall, hotel, factory or household series, product display rack series.
- **Easy to assemble,** convenient, and durable.



◀ RMS40CRCAST

SKU	Size	Capacity/Set (LBS.)	Size DIAM. x W	Color	Material	Applications
RMS40CRCAST	5"	460 lb.	5 x 1 1/4"	Steel	Hub: Polypropylene Frame: Nickel-plated Iron	Recommended for use Stationary Wire Shelving and Stationary Slanted Wire Shelving.

Product Features

- Easy to install quickly in the later stage, without the need for overall disassembly.
- Threaded rod casters achieve lifting function by rotating the threaded rod.
- High flexibility.



RMS401824SHF ▶



RMS401836SHF ▶



RMS402424SHF ▶



RMS402436SHF ▶



RMS402448SHF ▶

SKU	Dimensions W x D x H	Shelf CAP. (LBS.)	Color	Material	Applications	Compliance Standards
RMS401824SHF	24" x 18"	550 lb.	Chrome	Chrome-plated Carbon Steel	Recommended for use Stationary Wire Shelving and Stationary Slanted Wire Shelving.	NSF
RMS401836SHF	36" x 18"	550 lb.	Chrome	Chrome-plated Carbon Steel		NSF
RMS402424SHF	24" x 24"	550 lb.	Chrome	Chrome-plated Carbon Steel		NSF
RMS402436SHF	36" x 24"	550 lb.	Chrome	Chrome-plated Carbon Steel		NSF
RMS402448SHF	48" x 24"	550 lb.	Chrome	Chrome-plated Carbon Steel		NSF

Product Features

- Simple installation.
- Fixation.
- Flexibly increase or decrease the number of available layers.

SKU	Size	Color	Material	Applications
RMS40CLIP	1.2" x 1.7"	Black	ABS	Recommended for use Stationary Wire Shelving and Stationary Slanted Wire Shelving.

Product Features

- Good stability.
- Portability: The design of plastic clips is usually simple and easy to install and remove.



RMS40CLIP ▲

SKU	Size	Color	Material	Applications
RMS40SHOOK	1.1" x 1.4" x 0.6"	Chrome	Chrome-plated Iron	Recommended for use Stationary Wire Shelving and Stationary Slanted Wire Shelving.

Product Features

- Durable and rust resistant.
- Easy to install and highly flexible.



RMS40SHOOK ▲

SKU	Size	Color	Material	Applications
RMS40FTPLATE	2" x 2" x 1.6"	Chrome	Nickel-plated Iron	Recommended for use Stationary Wire Shelving and Stationary Slanted Wire Shelving.

Product Features

- Simple installation.
- Fixation.
- Shelving Post, Leveling Bolt.



RMS40PCAP ▲

SKU	Size	Color	Material	Applications
RMS40PCAP	1" x 1" x 0.7"	Black	Polyethylene(PE)	Recommended for use Stationary Wire Shelving and Stationary Slanted Wire Shelving.

Product Features

- Protective items: The plastic cover can effectively prevent dust and dirt from entering the interior of the storage rack, protecting stored items from external environmental influences and maintaining their cleanliness and hygiene.



RMS40PCAP ▲



Company Overview

Proudly introducing the renowned Raxwell brand to the American market. With a rich legacy rooted in quality and tradition, Raxwell meticulously maintains the highest standards in every facet of its operations.

Get In Touch

Location

20 Fairbanks, Ste 173
Irvine, CA 92168

Phone Number

(949) 528-3572

Web + Email

www.raxwellinc.com
sales@raxwellinc.com

Social Media

